

# Allflor



**Shock absorption**  
Absorbs impacts from jumps and protects the joints and muscles involved, making exercise a more comfortable and enjoyable experience.



**Vertical deformation**  
Excellent power return enables athletes to increase their on-court performance. Superior vertical stability eliminates "area" indentation.



**Superior ball bounce**  
A good sports floor has identical ball bounce in all areas and all across the floor.



**Sliding properties**  
Optimal slip coefficient offers natural grip avoiding falls and accidents, provides a safe playing surface.

Badminton

Basketball

Table Tennis

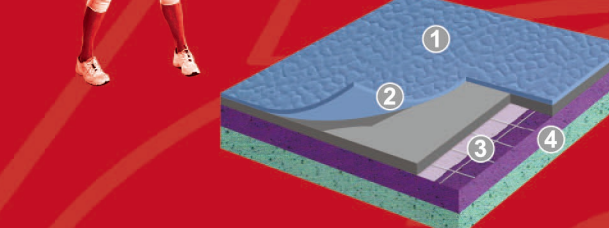
Dance floor

Food service Area

Volleyball

Gymnasium

Education



**1 Easy maintenance**  
PUR coating provides excellent resistance to dirt build-up while providing a durable surface that's easy to maintain.

**2 100% vinyl wearlayer**  
Superior durability and the sports floor life expectancy is 15 years above.

**3 Reinforced woven fiberglass inner layer**  
This provides even greater indentation resistance and shock absorption while increasing the overall durability of the surface complex.

**4 Closed cell foam backing**  
Excellent shock-resistance. Superior stability, no shifting underfoot. Good energy return for extended activities.

# Allflor

Allflor is a multi-purpose PVC sports flooring that has been designed to accommodate a wide range of sporting events. Elitesports is available in five thicknesses to satisfy varying degrees of shock absorption and performance requirements adapted to all levels of sports.

TECHNICAL DATA	STANDARD	SURFACE	TRAINING	MULTI-USE	COMFORT
<b>PRODUCT DESCRIPTION</b>					
Total thickness	EN 428	2.1mm	4.5mm	8.0mm	12.0mm
Width	EN 426	1.8m	1.8m	1.8m	1.8m
Length	EN 426	20.0m	20.0m	20.0m	20.0m
Weight	EN 430	3.0kg/m <sup>2</sup>	4.2kg/m <sup>2</sup>	5.8kg/m <sup>2</sup>	5.6kg/m <sup>2</sup>
<b>SPORTS CHARACTERISTICS</b>					
Shock absorption	EN 14808	12%	24%	38%	45%
Vertical deformation	EN 14809	≤3.5	≤3.5	≤3.5	≤3.5
Energy return	NF P 90 203	≥0.31	≥0.31	≥0.31	≥0.31
Sliding coefficient	EN 13036-4	80 -110	80 -110	80 -110	80 -110
Ball bounce	EN 12235	≥90%	≥90%	≥90%	≥90%
IPI	---	---	≤3.5	≤3.5	≤3.5
<b>TECHNICAL CHARACTERISTICS</b>					
Abrasion resistance	EN ISO 5470-1	≤350mg	≤350mg	≤350mg	≤350mg
Impact resistance	EN 1517	≥8	≥8	≥8	≥8
Indentation resistance	EN 1516	≤0.5mm	≤0.5mm	≤0.5mm	≤0.5mm
Surface treatment	---	PUR	PUR	PUR	PUR
Foam backing	---	---	CXP-HD	CXP-HD	CXP-HD
Anti-bacterial	---	Yes	Yes	Yes	Yes
<b>CLASSIFICATION</b>					
Fire resistance	EN 13501-1	Cfl-s1	Cfl-s1	Cfl-s1	Cfl-s1
Light resistance	EN ISO 105-B02	≥6	≥6	≥6	≥6
Sound isolation	EN ISO 717/2	12dB	21dB	24dB	28dB
<b>CE MARKING</b>					
CE		EN 14041			

Olympic Games | World Championships | Asian Games  
Partner of International Sport Events



Allflor SPORTS FLOORING

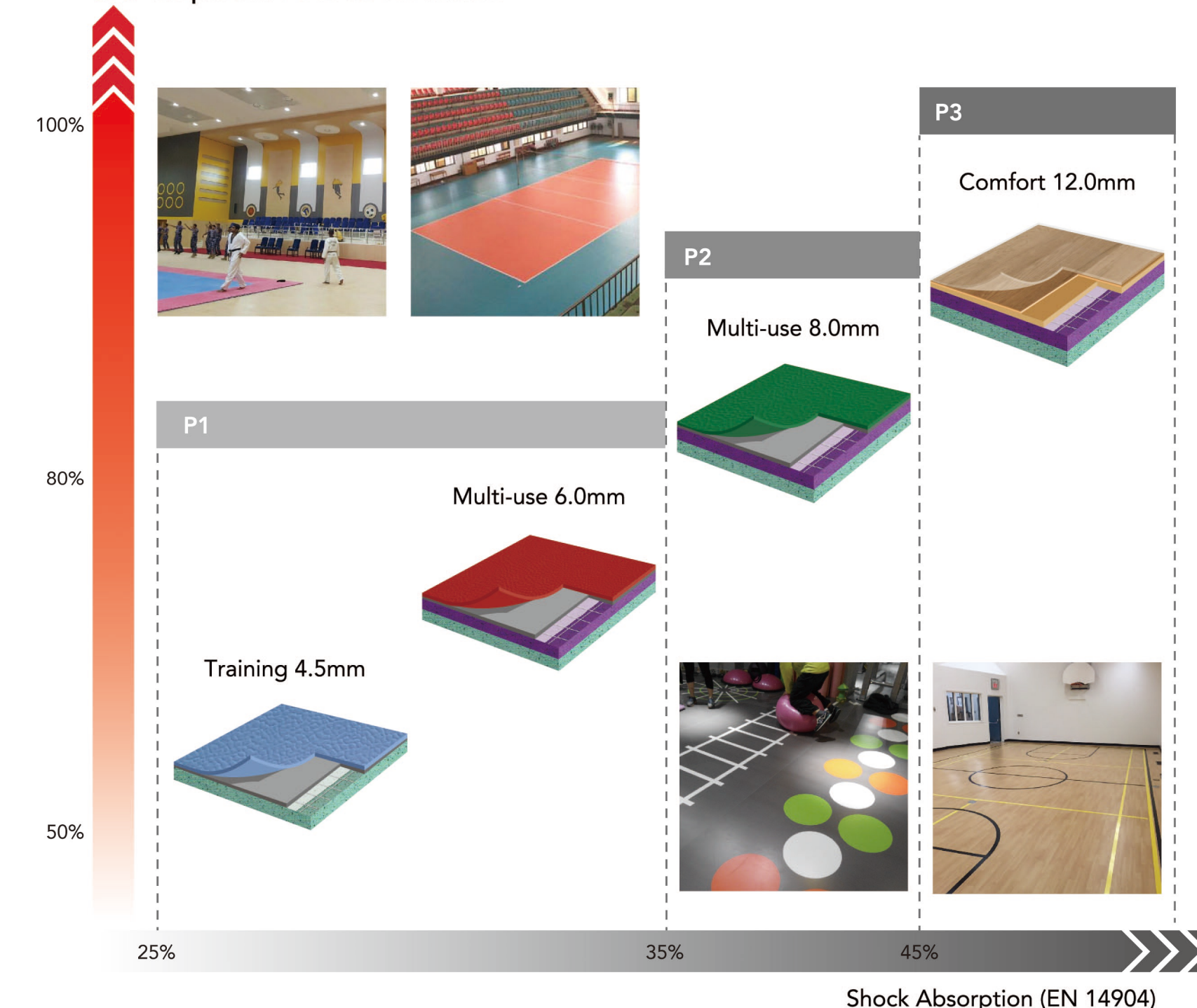
## ALLFLOR SPORTS FLOORING

Basketbal / Volleyball / Badminton / Futsal / Handball / Table tennis...



## PRODUCT SELECTION GUIDANCE

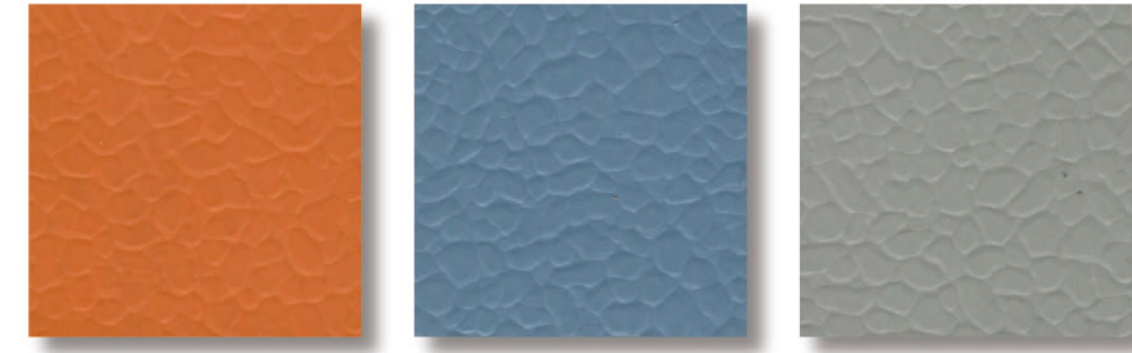
IPI=Impact Protection Index



**TRAINING**  
Colours



8020 8030 8022



8023 8025 8021

**WOOD**



8019 8010

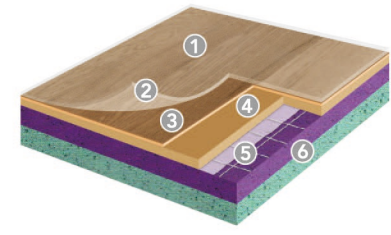


8022 8015

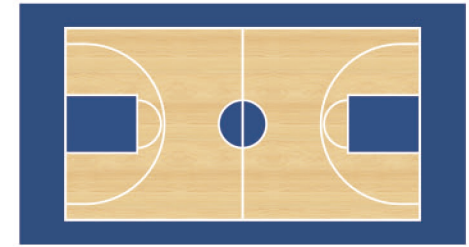


8011 8017

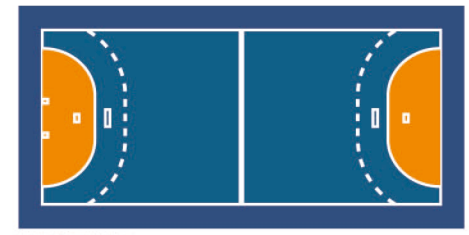
**MULTI-USE**  
Colours



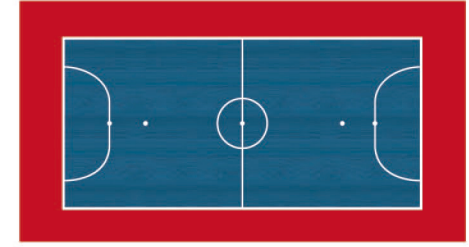
- 1 PUR coating
- 2 Durable wear layer
- 3 Printing layer
- 4 Compact layer
- 5 Reinforced fiberglass layers
- 6 Closed cell foam backing



**BASKETBALL**  
Play area: 28m X 15m  
Play area + surround: 32m X 19m



**HANDBALL**  
Play area: 40m X 20m  
Play area + surround: 44m X 24m



**FUTSAL**  
Play area: 38-42m X 18-22m  
Line width: 8cm



Red 6183 Mint Green 6570 Blue 6430



Grey 6758 Orange 6134 Sky Blue 6445



Dark Grey 6873 Teal 6431 Coral 6146



Maple 8019 Oak 8010



**COMFORT**  
Colours



Mint Green 9602 Maple 8019

- Maximum comfort and safety.
- Shock absorption  $\geq 45\%$  {EN14904} in the P3 category.
- Suitable for all levels and all sports use.
- All uni colours and wooden designs are available.



Wood Maple 6381 Wood Natural 6331



Wood Grey 6708 Wood Chocolate 6068



Wood Black 6840 Wood Blue 6453

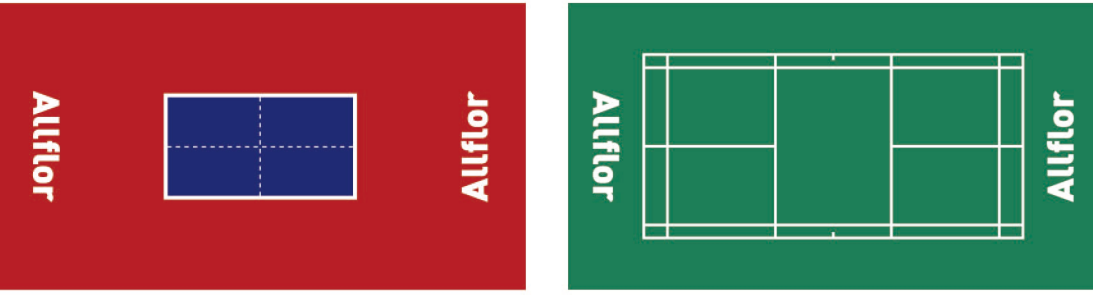
**SPEED**  
Colours



8051 8052 8026



8053 8054 8026



8281 8031 8032



8029 8028 8026

